



APPENDIX F

MAP OF TMDLS AND IMPAIRED WATERS

Lexington County TMDL Prioritization & Required MS4 Reduction (%)

Impaired Station	Reduction	TMDL Basin
S-260	92.1%	Lower Saluda River
S-149	89.2%	Lower Saluda River
S-150	88.5%	Lower Saluda River
S-287	67.0%	Rawls Creek
C-294	58.0%	Lower Saluda River
C-025	54.0%	Congaree Creek
C-008	40.0%	Congaree Creek
C-067	36.0%	Congaree Creek
C-005	27.0%	Congaree Creek

Legend

- Point Sources
- Roads
- Interstates
- USGS
- Lake Murray
- Incorporated Areas
- TMDL Basins
- Watersheds
- County Boundary

Monitoring Stations

- Not Listed
- Standard Attained
- Impaired Station

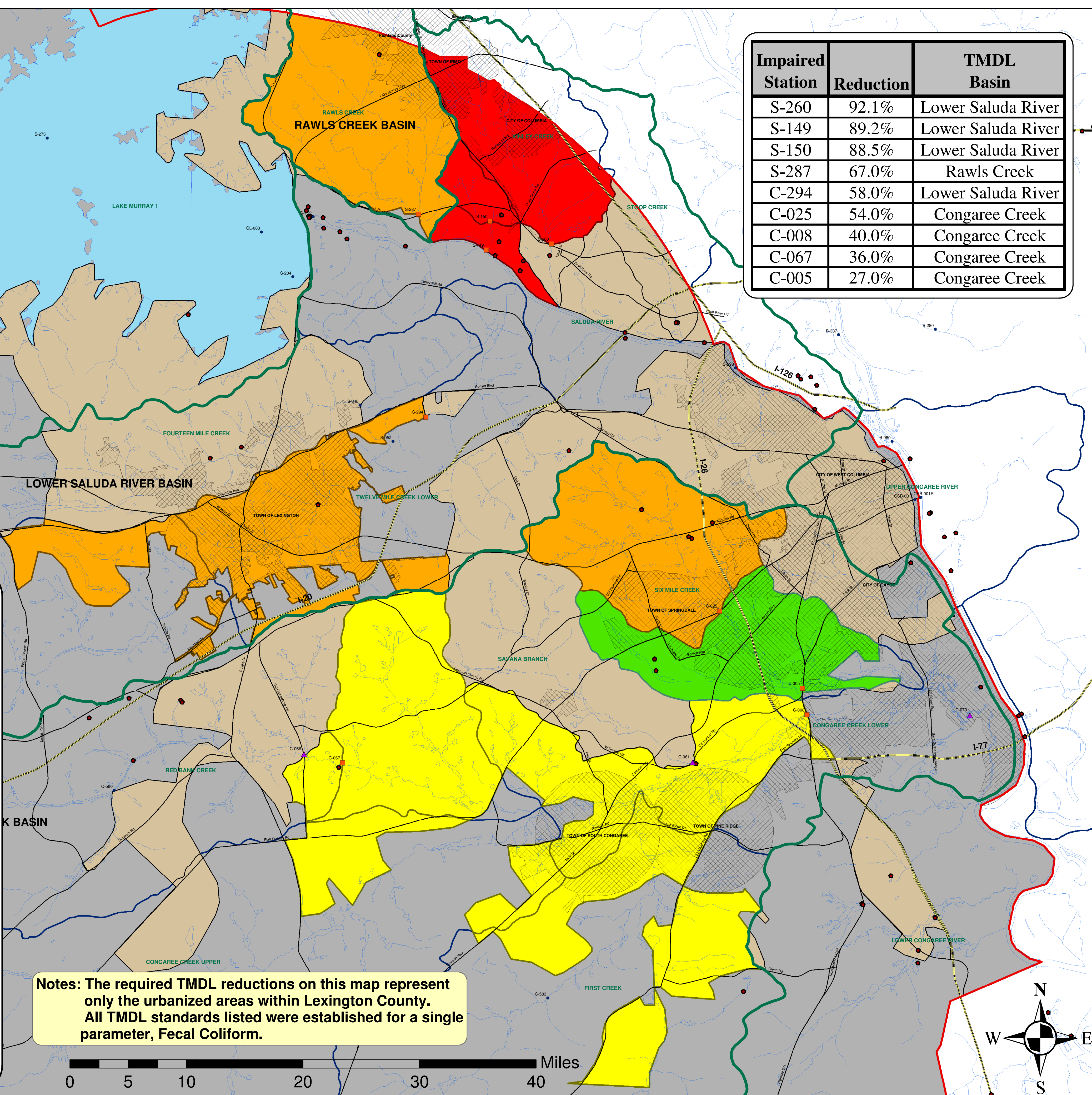
Water Quality

- 0.00%
- 0.01% - 27.0%
- 27.1% - 40.0%
- 40.1% - 67.0%
- 67.1 - 92.1%

Lexington County TMDL Basins

Legend

- Urbanized_Areas
- TMDL_Basins



Notes: The required TMDL reductions on this map represent only the urbanized areas within Lexington County. All TMDL standards listed were established for a single parameter, Fecal Coliform.

